



TK International
020 7794 8700
www.t-k.co.uk

Residential Sales
Residential Lettings
Property Management

Sales Office:
9 Heath Street
Hampstead
London NW3 6TP
E: sales@t-k.co.uk

Lettings Office:
16-18 Heath Street
Hampstead
London NW3 6TE
E: lettings@t-k.co.uk

tk.international
TK International
TK International

Est.
1998



Hollycroft Avenue Hampstead NW3

Accessed via a private entrance, a substantial and elegant four/five bedroom maisonette with wonderfully generous accommodation throughout, presented in immaculate condition.

This impressive family home, which occupies the entire upper three floors of a substantial semi-detached Edwardian house, exudes charm and has been reconfigured and interior designed to an exceptional standard by the present owners.

A stunning herringbone wood flooring is featured throughout much of the apartment, as are beautifully ornate marble mantelpieces in the family room, dining room and principal bedroom suite respectively.

The property enjoys excellent entertaining space, including a family room and a separate dining room from which a balcony spanning the full width of the room is accessed, plus a beautifully appointed kitchen/breakfast room, which features a central island with a solid marble worktop.

Hollycroft Avenue is a leafy, tree-lined road forming part of the coveted "Crofts" - a highly sought-after family orientated area, which is located within easy reach of the vast open spaces of Hampstead Heath and Golders Hill Park.

£3,295,000

Leasehold













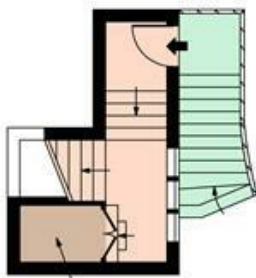




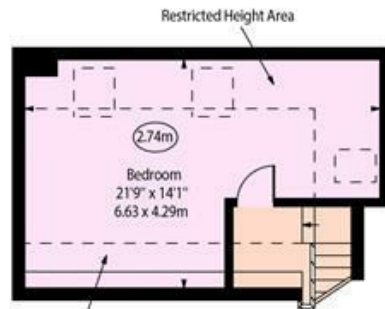
Hollycroft Avenue,
Hampstead, NW3



○ - Ceiling Height



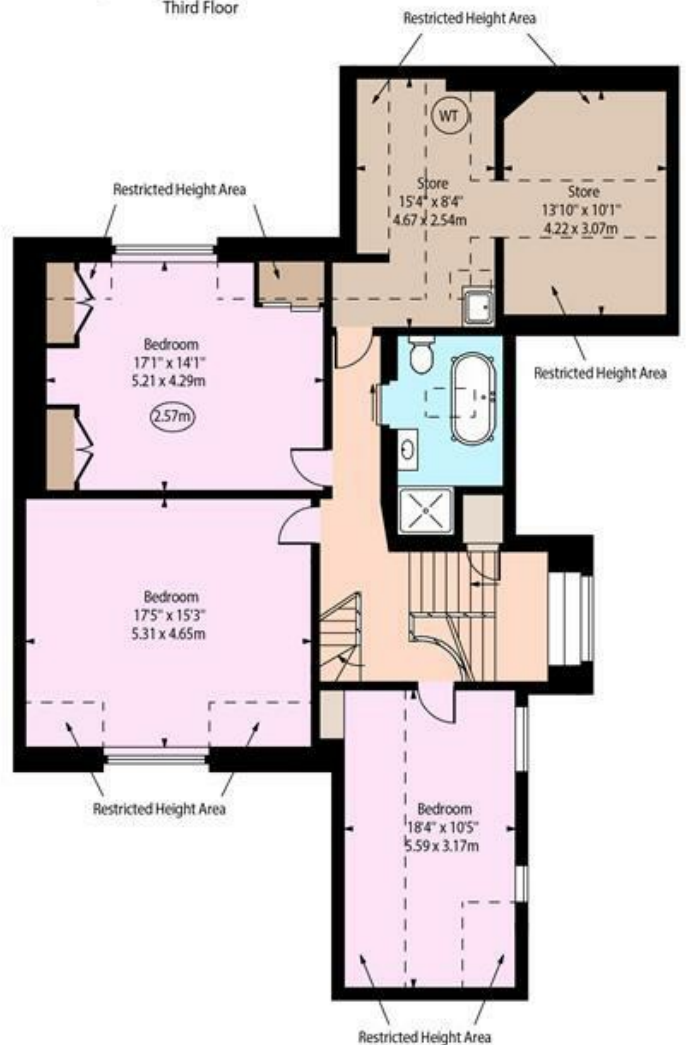
Eaves Storage
Raised Ground Floor



Restricted Height Area
Third Floor



First Floor



Second Floor

Approx. Floor Area Including Restricted Heights 3011 Sq Ft - 279.72 Sq M
(Including Eaves Storage)

Approx Gross Internal Area 2566 Sq Ft - 238.38 Sq M

For Illustration Purposes Only - Not To Scale
www.goldlens.co.uk
Prepared for TK International
Ref. No. 024004K